

BÖLLHOFF

NEW

RIVKLE® Seal Ring



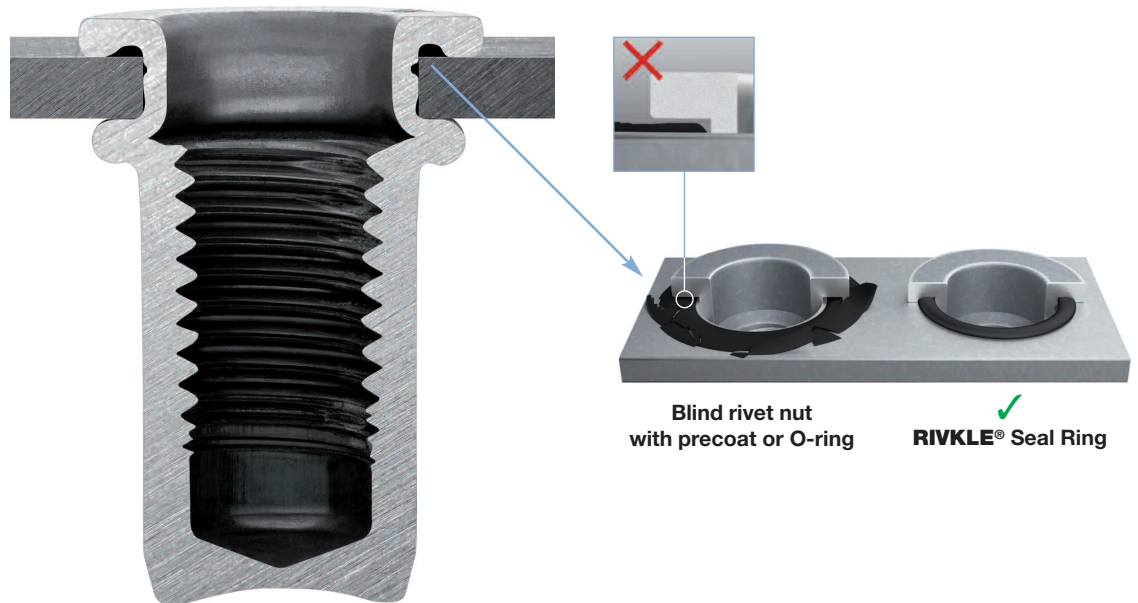
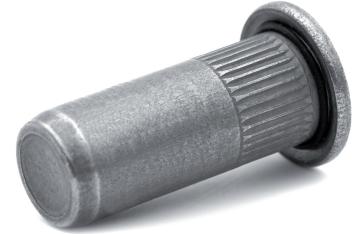
RIVKLE® Seal Ring

The **RIVKLE® Seal Ring** technology features a captive sealing ring for simple and reliable installation, even during automatic blow-feed installation. The resulting assembly is robust and creates a sealed fastening point which meets the ISO 20653 and automotive quality requirements.

Tightness in all circumstances

Preserve your assemblies from external influences

This insert leaves no room for compromise and ensures sealing against fluids while retaining the performance of RIVKLE® over time (metal-to-metal contact). All our products are proof tested with air pressure in accordance with stringent process (ATEQ) and comply with the highest demands from automotive industry.



Setting influences

- To guarantee the sealing performance, the setting process has to be done properly.
- BÖLLHOFF ensures a repeatable and reliable setting process thanks to optimized design and adapted setting tools.
- The best way to ensure the optimized mechanical and fluid tightness performance is to use the RIVKLE® Seal Ring fastener with a BÖLLHOFF setting tool.

Performance

- Tightness performance after setting reaches IPX7 according to ISO 20653.
- This sealing performance remains over time, even under thermal stress.

Simplification

- Simplify your sealed assemblies with a solution directly integrated into your RIVKLE® nuts or studs.
- Keep enjoying the advantages of simple and quick setting methods, either manual or automatic.

RIVKLE® Seal Ring for EV applications

- Quality guarantee: proven sealing (ATEQ), IPX7 range according to ISO 20653
- 100% sorting to ensure required ppm levels
- Fully compatible to battery trays, cross car beam, roof bar fixations and fenders fixations
- Conformity of setting ensured thanks to full setting process control
- Prepared to satisfy high volume demands all over the world (production in many BÖLLHOFF sites).

The **RIVKLE® Seal Ring** range is available with NBR* seals for temperature stability from -30°C to 100°C.

	Steel	Flat head	Hexagonal	Closed					
	d (mm)	L (mm)	B (mm)	e (mm) (min - max)	H ^{+0.1/0} (mm)	S (mm)	L ₂ (mm)	E _{max} (mm)	
M5	19.2 21.4		13.0	0.8 - 3.0 2.5 - 5.0	7.0	S=5.0-e S=7.1-e	13.0	1.5	233 91 050 807 233 91 050 808
M6	22.0 24.2		15.0	0.8 - 3.0 2.5 - 5.0	9.0	S=4.6-e S=6.9-e	16.5	1.5	233 91 060 026 233 91 060 027
M8	26.5 28.7		18.0	0.8 - 3.0 2.5 - 5.0	11.0	S=5.5-e S=7.7-e	19.8	1.5	233 91 080 875 233 91 080 876

	Steel	Flat head	Knurled	Closed					
	d (mm)	L (mm)	B (mm)	e (mm) (min - max)	Ø ^{+0.1/0} (mm)	S (mm)	L ₂ (mm)	E _{max} (mm)	
M5	19.3 21.5		12.0	0.5 - 3.0 2.5 - 5.0	8.0	S=4.1-e S=6.2-e	14.8	1.5	233 97 050 693 233 97 050 694
M6	22.3 24.5		13.0	0.8 - 3.0 2.5 - 5.0	9.0	S=4.3-e S=6.5-e	16.5	1.5	233 97 060 813 233 97 060 814
M8	26.6 28.5		16.0	0.8 - 3.0 2.5 - 5.0	11.0	S=4.8-e S=7.1-e	19.8 19.9	1.5	233 97 080 757 233 97 080 758

	Steel	Flat head	Knurled						
	d (mm)	B (mm)	L ₁ (mm)	e (mm) (min - max)	Ø ^{+0.1/0} (mm)	S (mm)	L ₂ (mm)	E (mm)	L (mm)
M6		13.0	13.0	0.8 - 3.0	9.0	S=4.8-e	9.0	1.5	16.3 - 20.8
									372 97 060 537

The **RIVKLE® Seal Ring** range is also available with FKM** seals for a temperature stability from -15°C to 220°C (cataphoresis passage).
On request, please contact BÖLLHOFF.

*NBR: O-RING in NITRILE
**FKM: O-RING in FLUOROCARBON



BÖLLHOFF



Böllhoff Group

Innovative partner for joining technology with assembly and logistics solutions.

Find your local partner at www.boellhoff.com or contact us at fat@boellhoff.com.

Passion for successful joining.